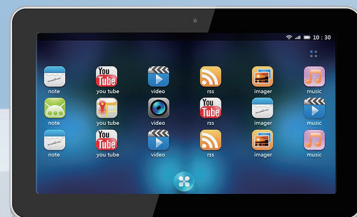
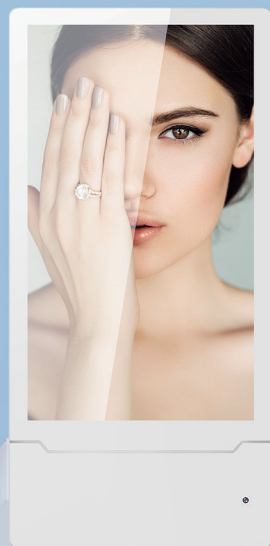


Smart Commercial Display Product Manual

Wall-mounted Advertising Player/All-in-One Machine/Floor-standing Advertising Player
Girlfriend Machine/Conference Machine



Android HD Touch - Screen Advertising/ Industrial - Control All - in - One Device

> Product Features

- 1、High-definition display screen with multi-touch support
- 2、Standard configuration: RK3399 (Options available: RK3288/RK3576/RK3578/RK3588)
- 3、4G DDR + 32G eMMC (Note: Memory specifications follow industry standard abbreviations)
- 4、Built-in WIFI and Bluetooth for convenient file transfer
- 5、Rich input/output interfaces, enabling connection with various external devices
- 6、Mainly applicable to hospitals, factories, schools, hotels, restaurants, shopping malls, banks, airports, railway stations, etc



> Usage Scenarios



Industrial
manufacturing



medical
equipment



security
monitoring



catering and
entertainment



education and
training



governmentaffairs and
office work



Model		SWRT700F	SWRT110B	SWRT101E	SWRT1331	SWRT1401	SWRT1561	SWRT1731	SWRT1851
• LCD		7"	10.1"	10.1"	13.3"	14"	15.6"	17.3"	18.5"
• Dimensions (mm)		TBD	355x228x33	355x228x33	TBD	355x228x33	404x253x32	TBD	462x283x35
• Resolution		1024x600	1920x1080	1920x1080	1920x1080	1920x1080	1920x1080	1366x768	1366x768
• Touch Screen		Capacitive touch screen with multi-touch functionality							
• CPU	Model	Standard configuration: RK3399 (Options: RK3288/RK3576/RK3578/RK3588)							
• Multimedia		High-Definition Video Decoder (4K@60fps and FHD 1080p@60fps)							
		High-Definition Video Encoder (Up to1080@30fps)							
		The graphics processor provides 3D graphics support for OpenGL ES1/2/3.0, OpenVG 1.1 and DirectX 11							
		2D/3D GPU (Mali T764)							
		Powerful power management unit (PMU)							
• DDR Flash	Dual Channel DDR3/L	4G							
	eMMC/NAND flash	32G (64G/128G optional)							
	Three-axis	Freescale MMA8452Q							
• Microphone		Built-in microphone							
• Operating System	OS	Android							
	Linux Kernel	Linux optional							
• WIFI		Ap6330 Module(Broadcom IEEE 802.11 a/b/g/n,内置无线网络 (2.4G/5G)+蓝牙4.0模块							
• Ethernet	Rj45	RTL8211E 10M/100M /1000M							
Standard • application program	Supported music formats	MP3,WMA,WAV,OGG,AAC,FLAC,3GP...							
	Supported video formats	MPEG1/2/4,AVI,WMV,MKV,MOV,VP8, H.263/264/265...							
	Supported image formats	JPG,BMP,PNG...							
	Browser	IE browser							
	App Store	Google Play Store							
	Adobe Flash Player	Version 11.1 or later							
	HTML5	support							
	DLNA	support							
	Multi-window	support							
Input and • output ports	Mini USB Interface 1	Supports data transmission (When HDMI is input, the MINI-USB outputs TP control signals to peripherals)							
	USB type	USB2.0x2							
	HDMI	HDMI Output (Optional)							
	power supply	DC 12V 3A							
	button	Power							
	Micro SD card slot	For SD card							
	headphone	20 mW @ 16 ohms, stereo, 3.5mm headphone jack							
	speaker	Built-in 4Ω/3W speakers × 2							
	other	Micro USB port, UARTx2, RS232x1							
• Others	camera	Front 300,000 / 2,000,000 options available							
	human body induction	Monitor with touch screen (optional)							
	Net weight (kg)	TBD	TBD	TBD	TBD	TBD	TBD	TBD	TBD
	Shell material	Standard plastic (ABS+PC) / metal optional							
	VESA hole (mm)	75x75							



Model		SWRT215A	SWRT2401	SWRT270A	SWRT320A	SWRT430A	SWRT550A	SWRT650A
• LCD		21.5"	24"	27"	32"	43"	55"	65"
• Dimensions (mm)		539x332x38	593x360x45	603x398x45	602x550x45	TBD	TBD	TBD
• Resolution		1920x1080	1920x1080	1920x1080	1920x1080	1920x1080	1920x1080	1920x1080
• Touch Screen		Capacitive touch screen with multi-touch functionality						
• CPU	Model	Standard configuration: RK3399 (Options: RK3288/RK3576/RK3578/RK3588)						
• Multimedia		HD video decoder (4K@60fps and FHD 1080p@60fps)						
		High - definition video encoder (up to 1080p@30fps)						
		Graphics processing unit provides 3D graphics support for OpenGL ES 1/2/3.0, OpenVG 1.1 and DirectX 11.						
		2D/3D GPU (Mali T764)						
		Powerful Power Management Unit (PMU)						
		I2S master and slave interface audio						
• DDR Flash	Dual Channel DDR3/L	4G						
	eMMC/NAND flash	32G (64G/128G optional)						
	Three-axis	Freescale MMA8452Q						
• Microphone		Built-in microphone						
• Operating System	OS	Android						
	Linux Kernel	Linux optional						
• WIFI		Ap6330 Module (Broadcom IEEE 802.11 a/b/g/n, built-in wireless network (2.4G/5G) + Bluetooth 4.0 module)						
• Ethernet	Rj45	RTL8211E 10M/100M /1000M						
Standard • application program	Supported music formats	MP3,WMA,WAV,OGG,AAC,FLAC,3GP...						
	Supported video formats	MPEG1/2/4,AVI,WMV,MKV,MOV,VP8, H.263/264/265...						
	Supported image formats	JPG,BMP,PNG...						
	Browser	IE Browser						
	App Store	Google App Store						
	Adobe Flash Player	V11.1 or higher version						
	HTML5	Supported						
	DLNA	Supported						
	Multi-window	Supported						
• Input and output ports	Mini USB Port 1	Supports data transfer (when HDMI input, MINI-USB outputs TP control signals to peripherals)						
	USB Type	USB2.0x2						
	HDMI	HDMI INPUT (Optional, extra cost USD10)						
	Power Supply	DC 12V 3A	DC 19V 3A			DC 19V 4A	DC 19V6.5A	
	Buttons	Power Button						
	Micro SD card slot	For SD card						
	Headphone	20 milliwatts @ 16 ohms, stereo, 3.5mm diameter headphone jack						
	Speakers	Built-in 4Ω/3W speakers ×2						
	Others	Micro USB port, UARTx2, RS232x1						
• Others	camera	Front 300,000 / 2,000,000 options available						
	human body induction	Monitor with touch screen (optional)						
	Net weight (kg)	TBD	TBD	TBD	TBD	TBD	TBD	TBD
	Shell material	Standard plastic (ABS+PC) / metal optional						
	VESA hole (mm)	100x100	100x100	200x170	200x170	400x200	400x200	800x400

Wall-mounted All-in-One Machine

> Product Features

- 1. Standard configuration: RK3399 (Options: RK3288/RK3576/RK3578)
- 2. Android operating system
- 3. 18.5-inch high-definition touch screen
- 4. Monocular 5-megapixel high-definition camera
- 5. Built-in NFC card reader
- 6. Built-in microphone with omnidirectional sound pickup
- 7. Rich external interfaces
- 8. Supports Bluetooth, Wi-Fi, and Ethernet connections; optional 4G/5G all-network connectivity



> 使用场景



Enterprise



School



Hospital



Education and Training



Model		MegaPad 1854
Screen	Size	18.5 inches, Full Viewing Angle
	Resolution	1920(H)×1080(V)
Basic Specifications	Operating System	Android
	Processor	Standard configuration: RK3399 (Options: RK3288/RK3576/RK3578)
	Memory	8G DDR + 64G EMMC (128G optional)
	Device Power Supply	DC 12V/3A
	Device Power Consumption	36W
	Relative Humidity	0%-90% (Without condensation)
	Operating Temperature	-10°C~50°C
	Storage Temperature	-20°C~70°C
	Operating Environment	Indoor
	Device Dimensions	456.3*282.5*36mm
Hardware Configuration	External Buttons	Power key (In power-on state: short press for standby, long press to shut down; In standby state: short press to power on; In shutdown state: long press to power on)
	Interface	1* DC Power Port
		1* USB TYPE-A 3.0
		1* USB TYPE-A 2.0
		1* RJ45 LAN (1000M, supports POE 802.3at)
		1* USB TYPE-C
	Camera	1* HDMI (Output)
		1* Headphone Jack
		5MP monocular camera, auto focus
		Built-in microphone, omnidirectional sound pickup
		2W*2
		14443 Type A/B, supports MIFARE DESFire EV3 protocol
	Bluetooth	Bluetooth 5.2
	WIFI	Wi-Fi 6 supports IEEE 802.11 a/b/g/n/ac

High-definition ultra-thin wall-mounted touch advertising machine

> Product Features

- 1、Tempered glass & aluminum alloy frame for stable and reliable structure
- 2、Original Grade A LCD screen, supporting 2K display, 1.07 billion colors, and more vivid color reproduction
- 3、Supports 1080P 60fps H.265/H.264 (video decoding)
- 4、2 USB ports, 1 HDMI port, 1 RJ45 port, meeting various requirements
- 5、Standard configuration: RK3566 (Options: RK3288/RK3399/RK3567)
- 6、Supports wired/wireless network connection and BT 4.0; optional 4G module
- 7、Supports horizontal/vertical screen playback and 360° rotation function
- 8、Powerful features: automatic loop playback, intelligent split-screen, scheduled on/off
- 9、Supports installation of multiple client software, featuring enhanced functionality and wider application scenarios



> Usage Scenarios



Food and Beverage Outlets

Shopping Malls

Exhibition Halls

Office Buildings

Service Halls

Airports



Model		AD2402S	AD3201	AD4301	AD5001	AD5501
• Screen Size	• Screen Size	24"	32"	43"	50"	55"
	• Resolution	1920x1080	1920x1080	1920x1080	1920x1080	3840x2160
	• Bare Machine Dimensions	TBD	736x430x59.9 (含挂架)	978x568x63 (含挂架)	1137x658x63 (含挂架)	1252x723x63 (含挂架)
	• Packaging Dimensions	TBD	865x565x200	1110x700x200	1265x805x200	1380x875x200
	• Product Bare Machine Weight	4.543kg	11kg	18.5kg	22kg	25kg
	• Product Weight After Packaging	TBD	13.5kg	22kg	26kg	30kg
• LCD Panel Parameters	Type	TFT-LCD				
	Brightness (Typical Value)	300cd/m²				
	Contrast Ratio (Typical Value)	1200:1				
	Viewing Angle (V/H)	178°/178°				
	Response Time (Gray Scale)	8ms				
	Visible Area	TBD	697mm*390.5mm	939.8mm*527.5mm	1096mm*615.5mm	1210mm*680.5mm
	Color Gamut	73%				
	Backlight	LED				
• System Configuration	Display Aspect Ratio	9:16				
	Service Life	>30000H				
	System Version	Android				
	CPU	Standard configuration: RK3566 (Options: RK3288/RK3399/RK3567)				
	GPU	Mali-G52				
	Main Frequency	1.8G Hz				
	Memory (DDR4)	2G (4G optional)				
	Storage (Flash)	16G (8G/32G/64G optional)				
• Power Supply Characteristics	Network Support	Ethernet, WiFi, Wireless peripheral expansion, 3G/4G (optional)				
	Speaker	2*8Ω/5W(Built-in)				
	Interface	USB 2.0×2 , RJ45×1 , HDMI×1 , TF Card slot × 1, Headphone × 1				
	Power Input	AC/100V~240V				
• Color and Material	Power Standby Power Consumption	≤1W				
	Power Consumption (Typical Value)	150W				
	Appearance Color	Black				
• Environmental Factors	Protective Glass	tempered glass				
	Installation Form	Wall-mounted / Embedded				
	Operating Temperature	- 5°C~40°C				
	Operating Humidity	10%RH~90%RH				
	Display Mode	S-IPS, normally black display, transmissive type				

High-definition vertical smart commercial advertising machine

> Product Features

- 1、Tempered glass & aluminum alloy frame for stable and reliable structure
- 2、Original Grade A LCD screen supporting 2K display, 1.07 billion colors for more vivid and brilliant color performance
- 3、Support for 1080P 60fps H.265/H.264 video coding
- 4、2 side-mounted USB ports and 1 HDMI port with protective door design to ensure data security
- 5、1 rear-mounted RJ45 port and power switch to meet daily operational needs
- 6、Standard configuration: RK3566 chip — (RK3288/RK3399/RK3567 optional)
- 7、Support for wired/wireless network connection, Bluetooth 4.0, and optional 4G module
- 8、Powerful functions including automatic loop playback, intelligent split-screen display, and scheduled on/off
- 9、Support for installation of multiple client software, enabling expanded functions and broader application scenarios



> Usage Scenarios



Shopping Mall



Hotel



KTV



Cinema



Bank



Real Estate



Model		ADV3201	ADV4301	ADV5001	ADV5501
•	Screen Size	32"	43"	50"	55"
	Resolution	1920x1080	1920x1080	1920x1080	1920x1080
	Bare Machine Dimensions	1680×490×450	1790×598×480	1810x685x480	1830x749x480
	Packaging Dimensions	TBD	1833*682*143	1853*769*143	1873*833*143
	Product Bare Machine Weight	TBD	34kg	33kg	39kg
	Product Weight After Packaging	TBD	41kg	40.5kg	46.5kg
• LCD Panel Parameters	Type	TFT-LCD			
	Brightness (Typical Value)	300cd/m²			
	Contrast Ratio (Typical Value)	1200:1			
	Viewing Angle (V/H)	178°/178°			
	Response Time (Gray Scale)	8ms			
	Color Gamut	73%			
	Backlight	LED			
	Display Aspect Ratio	9:16			
• System Configuration	Service Life	>30000H			
	System Version	Android			
	CPU	RK3288/RK3566/RK3568/RK3576/RK3588S/RK3588 (Optional)			
	GPU	Mali-G52			
	Main Frequency	1.8G Hz			
	Memory (DDR4)	2G (4G optional)			
	Storage (Flash)	16G (8G/32G/64G optional)			
	Network Support	Ethernet, WiFi, Wireless Peripheral Expansion, 3G/4G (optional)			
	Speaker	2*8Ω/5W(Built-in)			
	Interface (Side-mounted)	USB 2.0×2, HDMI×1, TF 1 card slot, 1 headphone jack			
• Power Characteristics	Interface (Rear-mounted)	Rj45×1			
	Power Input	AC/100V~240V			
	Power Standby Power Consumption	≤1W			
• Color & Material	Power Consumption (Typical Value)	150W			
	Appearance Color	Black			
	Protective Glass	Tempered Glass			
• Environmental Factors	Installation Form	Vertical			
	Operating Temperature	- 5°C~40°C			
	Operating Humidity	10%RH~90%RH			
	Display Mode	S-IPS, Normally Black Display, Transmissive Type			

Smart Mobile Free Screen / Girlfriend Device / Tablet Conference All-in-One Machine

> Product Features

- 1. High-definition large screen display effect;
- 2. High screen-to-body ratio display, ultra-clear visual experience;
- 3. High-performance 8-core processor;
- 4. Super fast charging, 4-5h battery life;
- 5. Hidden universal wheel design, easy to move freely;
- 6. Rotatable bracket, supporting horizontal/vertical screen, and angle adjustment at will.



> Usage Scenarios



Home Leisure



Study and Work



Exercise and Fitness



Parent - child Interaction



Model	XPAD24	XPAD27	XPAD32
• Screen Size	24寸 16:9	27寸 16:9	32寸 16:9
• Screen Resolution	Standard: 1920*1080 (3840x2160 optional)	Standard: 1920*1080 (3840x2160 optional)	Standard: 1920*1080 (3840x2160 optional)
• Operating System	Android	Android	Android
• Processor	Standard: RK3576 (RK3588 optional)	Standard: RK3576 (RK3588 optional)	Standard: RK3576 (RK3588 optional)
• Memory	8G+32G	8G+32G	8G+32G
• Refresh Rate	60Hz	60Hz	60Hz
• Panel	IPS	IPS	IPS
• Curvature	Flat	Flat	Flat
• Type	Flat Screen	Flat Screen	Flat Screen
• Brightness	300cd/m ²	300cd/m ²	300cd/m ²
• Touch Screen	Full Lamination 10 - Point Touch Control	Full Lamination 10 - Point Touch Control	Full Lamination 10 - Point Touch Control
• Input and Output Ports	USB2.0 Type A* 1	USB2.0 Type A* 1	USB2.0 Type A* 1
	USB3.0 Type A* 1	USB3.0 Type A* 1	USB3.0 Type A* 1
	TYPE-C OTG*1	TYPE-C OTG*1	TYPE-C OTG*1
	1 RJ45 Gigabit Ethernet Port	1 RJ45 Gigabit Ethernet Port	1 RJ45 Gigabit Ethernet Port
	DC IN*1	DC IN*1	DC IN*1
	3.5mm headphone jack, supporting headphone-microphone integration	3.5mm headphone jack, supporting headphone-microphone integration	3.5mm headphone jack, supporting headphone-microphone integration
• Battery	HDMI IN, maximum 4K 60fps	HDMI IN, maximum 4K 60fps	HDMI IN, maximum 4K 60fps
	9500mAh	9500mAh	9500mAh
	Battery life: 4-5 hours (4 hours for movie playback)	Battery life: 4-5 hours (4 hours for movie playback)	Battery life: 4-5 hours (4 hours for movie playback)
• Speaker	90W Super Fast Charging	90W Super Fast Charging	90W Super Fast Charging
• WIFI	8Ω3W*2	8Ω3W*2	8Ω3W*2
• Bluetooth	2.4G/5G Dual - band, Wi - Fi 6 supported	2.4G/5G Dual - band, Wi - Fi 6 supported	2.4G/5G Dual - band, Wi - Fi 6 supported
• Camera	Supports Bluetooth 5.2	Supports Bluetooth 5.2	Supports Bluetooth 5.2
• Network Port	Supports Bluetooth 5.2	Supports Bluetooth 5.2	Supports Bluetooth 5.2
• TF Card	200W external magnetic camera	200W external magnetic camera	200W external magnetic camera
• 4G	RJ45 Gigabit Ethernet Port	RJ45 Gigabit Ethernet Port	RJ45 Gigabit Ethernet Port
• Microphone	Support	Support	Support
• Relative Humidity	Support	Support	Support
• Operating Temperature	Support	Support	Support
• Storage Temperature	10%~90%	10%~90%	10%~90%
• Operating Environment	0°C~40°C	0°C~40°C	0°C~40°C
	-20°C~60°C	-20°C~60°C	-20°C~60°C
	Indoor	Indoor	Indoor

HD Conference Projection Touch All-in-One Machine

> Product Features

- 1. Supports magnetic adsorption of 2 styluses for convenient storage
- 2. Supports light sensor adjustment of brightness and DC dimming (to eliminate screen flicker) for more eye-friendly display
- 3. Equipped with a 4K ultra-high-definition display, supporting full-channel 4K UI display
- 4. 2 front USB2.0 + onboard USB3.0 & 2.0, supporting switching with channels
- 5. Supports wireless screen mirroring function
- 6. ±1mm high-precision infrared touch control for smooth writing
- 7. Supports simultaneous writing with two pens in two colors, making multi-person collaboration easier
- 8. Built-in 8-array microphones and a 64-megapixel autofocus camera



> Usage Scenarios



Office Meetings



Training Institutions



Financial Industry



Real Estate Industry



Conference and Exhibition



Model	IA65SC	IA75SC	IA85SC
Operating System	Android	Android	Android
CPU	Standard: RK3566 (RK3288/RK3399/RK3567 optional)	Standard: RK3566 (RK3288/RK3399/RK3567 optional)	Standard: RK3566 (RK3288/RK3399/RK3567 optional)
Storage	RAM: 2GB (4GB optional) ROM: 16GB (32GB/64GB optional)	RAM: 2GB (4GB optional) ROM: 16GB (32GB/64GB optional)	RAM: 2GB (4GB optional) ROM: 16GB (32GB/64GB optional)
Core Configuration	Quad-core Cortex-A55 up to 1.8GHz frequency	Quad-core Cortex-A55 up to 1.8GHz frequency	Quad-core Cortex-A55 up to 1.8GHz frequency
Refresh Rate (Hz)	60HZ	60HZ	60HZ
Resolution	3840×2160	3840×2160	3840×2160
Color Gamut	1.07B(10bit)	1.07B(10bit)	1.07B(10bit)
Contrast Ratio (Typ)	1200:1	1200:1	1200:1
Color Gamut NTSC (Typ)	72%	72%	72%
Viewing Angle	178°	178°	178°
Backlight Type	DLED	DLED	DLED
Screen Brightness (Typ)	350cd/m ²	350cd/m ²	350cd/m ²
Response Time	8 ms	8 ms	8 ms
Viewable Area (mm)	1430.5×803.5	1647.7×925.9	1895×1065.9
Overall Dimensions (mm)	1485×905.5×88.4	1707×1028.5×88.4	1953.5×1168×88.4
Packing Dimensions (mm)	1621×239×1110.5	1843×239×1234	2090×239×1373
Net Weight (KG)	36.85	47.65	61.65
Video Interface	HDMI IN 2.0*2	HDMI IN 2.0*2	HDMI IN 2.0*2
Audio Interface and Speakers	LINE OUT, SPDIF OUT, MIC IN Built-in 2*15W full-frequency speakers	LINE OUT, SPDIF OUT, MIC IN Built-in 2*15W full-frequency speakers	LINE OUT, SPDIF OUT, MIC IN Built-in 2*15W full-frequency speakers
Control Interface	RJ451, RS2321, TOUCH OUT, Bluetooth, Infrared Remote Control	RJ451, RS2321, TOUCH OUT, Bluetooth, Infrared Remote Control	RJ451, RS2321, TOUCH OUT, Bluetooth, Infrared Remote Control
Power Consumption	225W	270W	400W
Input Voltage	100-240V~50/60Hz	100-240V~50/60Hz	100-240V~50/60Hz
Operating Temperature/Humidity	0°C-40°C/10%-90% RH No condensation	0°C-40°C/10%-90% RH no condensation	0°C-40°C/10%-90% RH no condensation
Storage Temperature/Humidity	-20°C-60°C/10%-90% RH No condensation	-20°C-60°C/10%-90% RH no condensation	-20°C-60°C/10%-90% RH no condensation
Installation/Maintenance Method	Wall-mounted	Wall-mounted	Wall-mounted
Service Life (hours)	≥30000	≥30000	≥30000

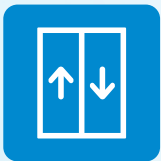
Wall-mounted elevator advertising machine

> Product Features

- 1. 18.5-inch HD full-view screen
- 2. Can be built with a camera, supporting face recognition and liveness detection
- 3. Maximum support for 3840*2160 resolution display, with a refresh rate of 60fps
- 4. Supports wired network 10/100M, wireless network 2.4G/5G, Bluetooth 4.0 and 3G/4G access
- 5. Supports NFC, capable of reading common IC cards
- 6. Supports multiple networking modes including Ethernet and WIFI, as well as audio and video encoding and decoding in various formats
- 7. Supports receiving media content via the network, storing it locally for loop playback, insertion, timing, and filler playback
- 8. Supports import via USB drive; direct playback from USB drive



> Usage Scenarios



Elevator



Shopping Mall



Hotel



Model		AD185	
Screen	Size	18.5寸	
	Resolution	1920*1080	
Binocular Camera (Optional)	Type	Color	Infrared
	Resolution	2 Megapixels	2 Megapixels
	Aperture	F2.0	F2.0
	White Balance	4.5MM	4.5MM
	Wide Dynamic Range	Support	Support
	Vertical Wide Angle	40 Degrees	0 Degrees
	Horizontal Wide Angle	65 Degrees	65 Degrees
Basic Specifications	Operating System	Android	
	Processor	Standard: RK3399 — (RK3288/RK3576/RK3578 optional)	
	Memory	4G DDR+32EMMC	
	Device Power Supply	12V/3A	
	Device Power Consumption	36MAX	
	Relative Humidity	0%-90% (In a state without water droplet condensation)	
	Operating Temperature	0°C~40°C	
	Storage Temperature	-20°C~60°C	
	Operating Environment	Indoor	
	Interface	USB A *2	
		RJ45 LAN□*1	
		MINI_USB*1	
		DC power port *1	
		2*8Ω/5W(Built-in)	
		SIM card slot (standard when 4G module is optional)	
		Audio interface*1	
		Rs232 serial port/UART expansion port x3	
		Supports Micro Tf card slot	
	Speaker	3W*1	
Power Characteristics	WIFI	2.4G supports IEEE 802.11 b/g/n	
	Bluetooth	Supports Bluetooth 4.2	
	NFC	Optional	
	Communication Method	4G all - network communication (optional)	

Ultra-clear Smart Display Screen

> Product Features

- 1、High-performance processor, ultra-strong RAM, multiple memory configurations optional
- 2、High-definition large-screen display effect
- 3、Capacitive touch support
- 4、Rich external interfaces
- 5、100M RJ45 port, Ethernet compatible
- 6、High screen-to-body ratio display for ultra-clear visual experience



> Usage Scenarios



Gaming & E-sports



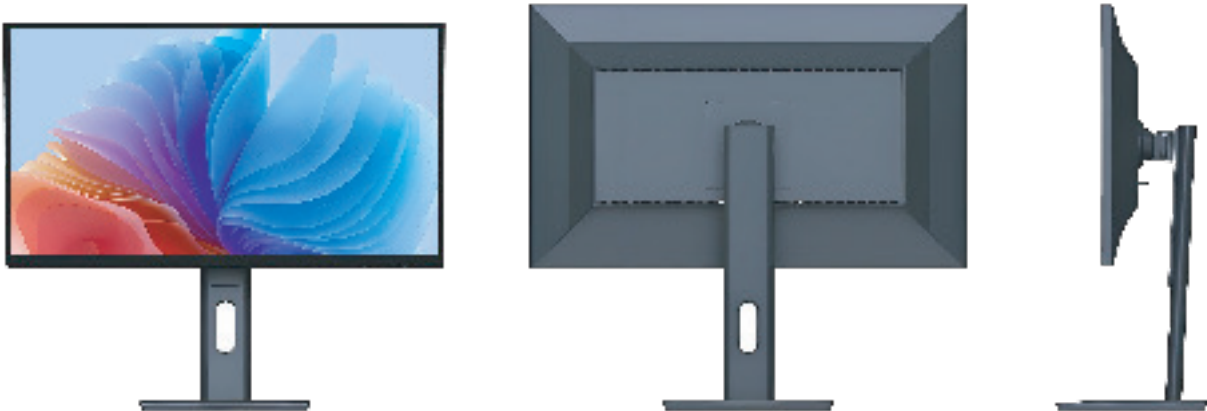
Work & Office



Home Entertainment



Education & Training



Model		DS27F		DS27F	DS27F
Display Screen Parameters	Size	21.5 inches		24 inches	27 inches
	Resolution	1920*1080		1920*1080	1920*1080
	Type	Liquid Crystal Display		Liquid Crystal Display	Liquid Crystal Display
	Display Aspect Ratio	16:9		16:9	16:9
	Display Color	1.07 B colors (RGB 8-bits +Hi_FRC)			
	Refresh Rate	60Hz			
	Brightness	350 cd/m ² MAX 400 cd/m ²			
	Contrast Ratio	1000:1			
	Color Gamut AdobeRGB	95%(Standard:1976)			
	DCI-P3	95%			
	SRGB	100%			
	HDR	400			
	Color Accuracy	△≤2 (Mean:Max<4)			
	Viewing Angle	178° (H)/178° (V)			
	Backlight	ELED			
	Screen Lifespan	≥30000Hour			
	Response Time	14ms (Typ.,GTG)/7ms(W OD) Rapid 5ms			
	Color Temperature	6500K			
Basic Specifications	Processor	RK3568	RK3568	RTD2775QT-CG	
	Operating Temperature	0°C~40°C			
	Operating Humidity	10%~90%			
	Storage Temperature	-20°C~60°C			
	Storage Humidity	10%~90%			
	Operating Altitude	5000m The following			
	Operating Environment	Indoor			
Motherboard	Interface	Type C*1 90W (DP IN+Reverse charging)			
		HDMI 2.0*1			
		DP 1.2*1			
		USB Type-A*2 USB Type-B*1			
Power Supply	Built - in Power Board	24V/7A			
	Input Power Range	Communication 100-240V			
	Indicator Light	White, stays on when powered on, blinks in standby mode			
Buttons	Number of Buttons	Five			
	Button Definition	Order from left to right (Menu/Confirm, Volume - (Up), Volume + (Down), Back, Power)			
Audio	Audio Output	3.5mm port, 4 segments			
	Speaker	2*3W 82db			

AI Digital Human All-in-One Machine

> Product Features

- 1、RK3588 8-core processor, Android 14 operating system
- 2、16G DDR + 128G EMMC
- 3、12MP (12-megapixel) monocular camera
- 4、4-microphone array, with human voice enhancement and intelligent noise reduction
- 5、Supports multi-touch function
- 6、Supports public network and local area network (LAN) deployment & usage (Gigabit Ethernet supported)



> Usage Scenarios



Shopping Mall



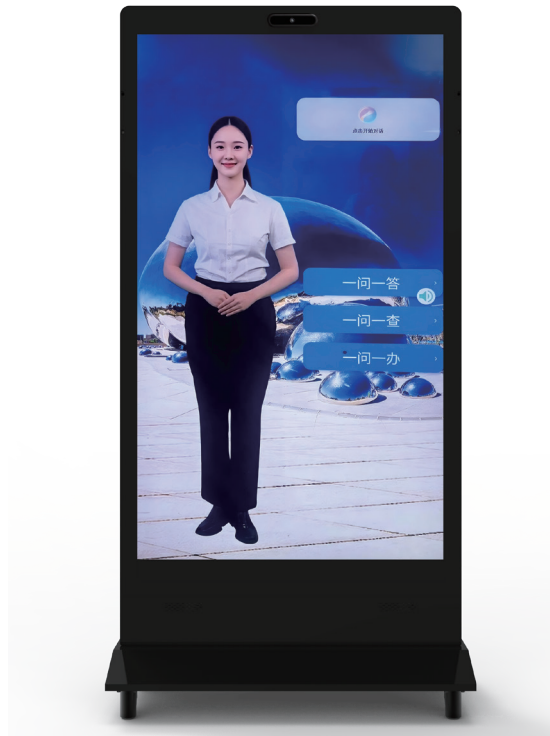
Hotel



Hospital



Government
Affairs Center



Model		VD6501
Screen	Size	65 inches, Full Viewing Angle
	Resolution	3840(H)×2160(V)
Basic Specifications	Operating System	Android 14 BOZZ OS
	Processor	RK3588, 4A76 @ 2.4GHz & 4A55 @ 1.8GHz
	Memory	16G DDR + 128G EMMC (Optional hard disk: 128G/256G/)
	Device Power Supply	AC 220V
	Device Power Consumption	288W Max
	Relative Humidity	0%-90% (Without condensation)
	Operating Temperature	-10°C~55°C
	Storage Temperature	-20°C~70°C
	Operating Environment	Indoor
	Device Dimensions	1832mm*896mm*450mm
Hardware Configuration	External Buttons	Rocker switch with indicator light
	Interfaces	1* AC Power Port
		6* USB TYPE-A 3.0
		2* USB TYPE-A 2.0
		1* RJ45 LAN (1000M)
		1* USB TYPE-C (can be used for DP output)
	Camera	1* HDMI (Output)
		1* Headphone Jack
	Camera	12MP monocular camera, 1/2.55", 30fps, adjustable angle
	Array Microphone	4-microphone array, human voice enhancement, intelligent noise reduction
	Speaker	15W*2
	Fan	FSY71X12H, rotation speed 4000,
	Touch	65-inch 10-point capacitive touch
	Bluetooth	Bluetooth 5.2
	WIFI	Wi-Fi 6 supports IEEE 802.11 a/b/g/n/ac

Bozz Technology (Shenzhen) Co., Ltd.

Smart R&D, smart manufacturing, smart IoT connects to the future

Bozz Technology (Shenzhen) Co., Ltd

Factory address: No.16, Jiayi Industrial Park, Zhangqi Road, Guixiang Community,
Guanlan Street, Longhua District, Shenzhen
Tel.: 0755-29307923
Mobile: 13823152485
Fax: 0755-29524432
Website: www.bozztek.com
Email: sales@bozzteck.com

Changsha Subsidiary

Address: Floor 29, Building 3, Yulong Tianxia Jiayuan Complex/Phase 2, No. 799
Youmatang Road, Guanshaling Street, Yuelu District, Changsha City

Hong Kong Subsidiary

Address: Room 06, 12/F, Taili Industrial Center, 32 Dayou Street, New Pungang,
Kowloon, Hong Kong

Beijing Liaison Office

Address: Xiangrui Garden, No. 100 North Bailusi Street, Chaoyang District, Beijing

Shandong Subsidiary

Address: Jia-4, 155 Wenchang Road, Licang District, Qingdao, P.R. China



官方公众号



公司官网

